



The SmartCan™

Disposable CO₂ absorber



Anaesthesia • CO₂ Absorbents

The SmartCan™ is Intersurgical's easy to use disposable absorber that has been developed specifically for clinical use during anaesthesia to absorb carbon dioxide within an anaesthetic breathing system.

The SmartCan is compatible with the GE Healthcare®, anaesthesia, Carestation® 650™, Carestation® 620™, Carestation® 650c Pendant™ Carestation® 650c Wall Mount™ and Carestation 750™.

It is essential that the user follows both the instructions for use of the appropriate GE Carestation and also the instructions for use supplied with each box of Intersurgical SmartCan absorbers.

For full details of how to attach and use the SmartCan, please refer to instructions for use.



Fast and easy exchange

The SmartCan enables fast exchange of absorbent without the need for time consuming pouring of loose granules, or the risk of contamination

Medical grade absorbents

for extra safety with volatile anaesthetics

Air-tight seal for storage

No dust emission

Low resistance scrim membranes ensure that any fine particles or dust are retained within the SmartCan and not allowed to escape into the breathing system or into the atmosphere during handling

Efficient CO₂ absorption

A gas dispersion chamber at the base of the SmartCan allows for optimum flow up through the absorbent





Intersurgical absorbents contained within the SmartCan™

Spherasorb

A unique medical grade soda lime designed specifically for clinical use

Spherasorb has a long history of use within anaesthesia and meets all the requirements of the United States and British Pharmacopoeias. Spherasorb's chemical formulation has been developed specifically to address the potential problems of use within the medical environment, while maintaining the highest possible CO₂ capacity.

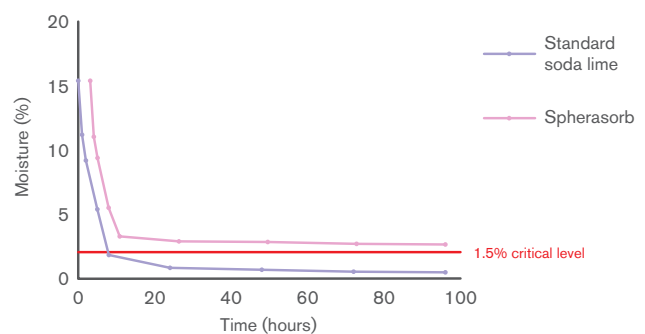
Features and benefits:

- Only 1.5% sodium hydroxide. Less than standard soda lime.
- Contains zeolite to reduce the risk of drying out and offer pH buffering. No other absorbent contains zeolite.
- Spherasorb is made of 3-4mm spheres, to allow hexagonal close packing, for efficient gas flow and absorption and minimise potential dust.

Independent tests have shown that Spherasorb's unique formulation significantly reduces the risk of drying out and reaction as well as heat generation with volatile anaesthetic agents. Spherasorb exceeds the requirements of the United States Pharmacopia (USP).



Drying curve. 400g of absorbent. 8 L/min oxygen flow (0% RH). Spherasorb vs Standard soda lime.



LoFloSorb

A unique medical grade CO₂ absorbent that contains no alkali hydroxide

LoFloSorb has a long history of use within anaesthesia and meets all the requirements of the United States and British Pharmacopoeias. LoFloSorb eliminates the risk associated with reactions with volatile anaesthetics.

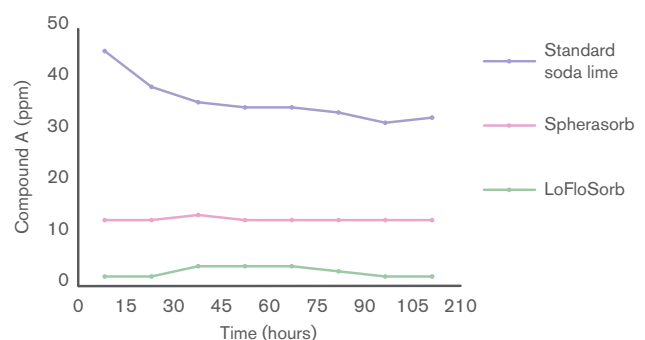
Features and benefits:

- LoFloSorb contains no potassium hydroxide and no sodium hydroxide. Therefore LoFloSorb contains no aggressive chemicals that can react with the volatile anaesthetics
- LoFloSorb is made of 3-4 mm spheres, to allow hexagonal close packing, for efficient gas flow and absorption and minimize potential dust
- LoFloSorb offers a very stable green to violet colour change. This eliminates the potential for exhausted product being mistaken for fresh

Due to the absence of any alkali hydroxide LoFloSorb does not last as long as standard soda limes or Spherasorb. LoFloSorb meets all the requirements of the United States Pharmacopia (USP).



LoFloSorb eliminates the risk of reaction with Sevoflurane



Compound A is a breakdown product of sevoflurane with dry absorbents. Independent tests have demonstrated that LoFloSorb eliminates the risk of reaction with sevoflurane and other volatile anaesthetics.

Safety information

All Intersurgical carbon dioxide absorbents are classified as irritant under regulation (EC) No. 1272/2008 [CLP]

They all contain less than 4% sodium hydroxide and are not subject to transport restrictions

They are exempt from both, (ADR) under special provision 62; and IATA under special provision A16

H315: Causes skin irritation

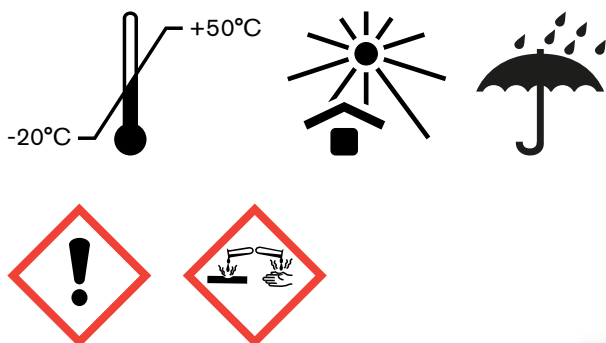
H318: Causes serious eye damage

P280: Wear protective gloves/protective clothing/eye protection/face protection

P302/P352: if on skin: Wash with plenty of soap and water

P305/351/338: if in eyes: Rinse cautiously with water for several minutes. Remove contact lenses, if present and easy to do, continue rinsing

P332/313: If skin irritation occurs: Get medical advice/attention



Committed to lowering our environmental impact

Intersurgical is committed to lowering our environmental impact of both products and services and have implemented an Environmental Management System which has been certified to the international standard ISO 14001:2015. We follow this framework to establish and ensure a sustainable approach across the business and throughout the lifecycle of our products. Spherasorb design and production follows this with waste recycled back into usable Soda Lime, reducing factory waste to minimal levels. In addition Spherasorb's specific design ensures maximum capacity and longevity of use reducing the amount required to be used and further reducing costs and the environmental impact of waste.



2169001



2169002



2169003

Code	Description	Size	Box Qty.
2169001	SmartCan™ Spherasorb disposable CO ₂ absorber, white to violet colour change	1.6L	6
2169002	SmartCan™ Spherasorb disposable CO ₂ absorber, pink to white colour change	1.6L	6
2169003	SmartCan™ LoFloSorb disposable CO ₂ absorber, green to violet colour change	1.6L	6

GE Healthcare is a registered trademark of General Electric Company

Carestation is a registered trademark of Datex-Ohmeda, Inc. Datex-Ohmeda, Inc. is a General Electric Company

620, 650, 650c Pendant and 650c Wall Mount are trademarks of General Electric Company

IS5.36 NL • Issue 1 11.21



Intersurgical Benelux B.V. Vluchtoord 28, 5406 XP, Uden, Nederland

T: +31 (0)413 243 860 F: +31 (0)413 243 869 info@intersurgical.nl www.intersurgical.nl



The manufacturer Intersurgical Ltd is certified to ISO 9001:2015, ISO 13485:2016, ISO 14001:2015 and MDSAP

Please think before you print
Save energy and paper.
If you must print this information sheet please print it double sided.